



3D SYSTEMS™

## 3D SYSTEMS University

CubeX Printer

“Lesson – CubeX Maintenance”

Revision date: 10/21/13



3D SYSTEMS™

# Objectives

*After completing this lesson you will:*

- Be able to properly maintain the printer and parts.
- Know how to restore roughness to the print pad
- Learn to adjust the level of the jet wiper height
- Able to check and tighten the print bed

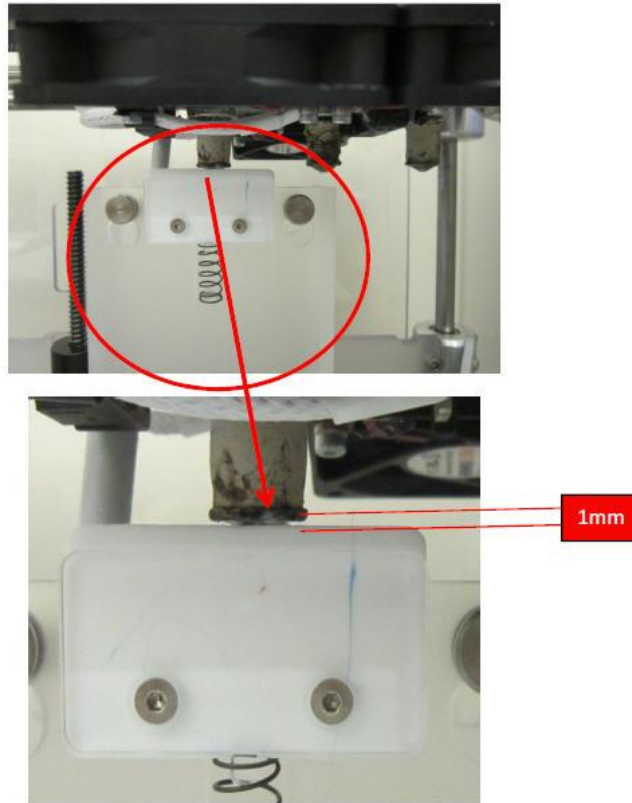
# Restoring Roughness to the Print Pad

- ❑ To restore roughness to the Print Pad, run the sandpaper included in your toolkit diagonally across the bed corner to corner in both directions.



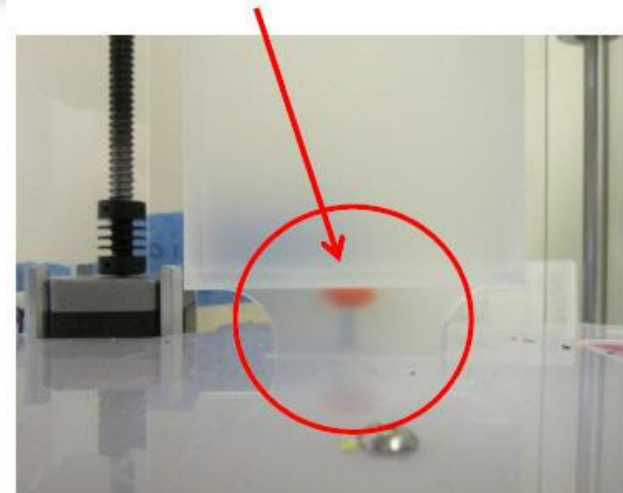
# Leveling the Jet Wiper Height

- ❑ 1. The white plastic print jet wiper should be positioned roughly 1mm (0.040") below the bottom of the nozzle flange as shown below.

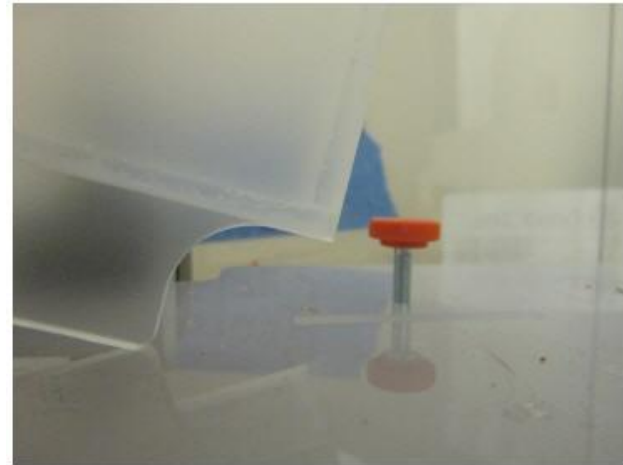


# Leveling the Jet Wiper Height

2. To adjust gap of print jet wiper twist the orange height adjustment knob below the jet wiper box.

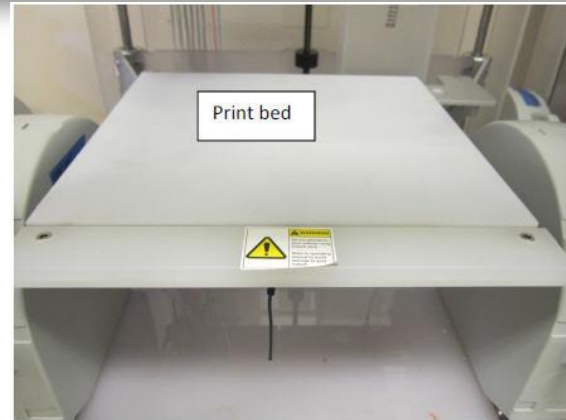


3. Raise the print bed and lift the jet wiper box to access the orange height adjustment knob.

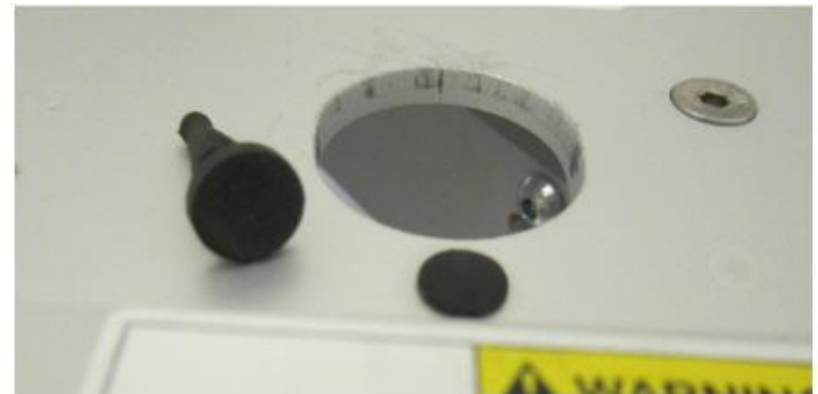


# Check/Tighten the Print Bed

1. Remove the print bed from the printer.



2. Ensure the feet for holding the print bed are the smaller rubber feet shown below. **If your feet are the larger size, please contact the Cubify Support team to get replacement parts.** Note you are still able to use the CubeX and print, the smaller feet just help with the stabilization of the print bed.



# Check/Tighten the Print Bed

3. Loosen the two front bolts as shown below using the tools provided in the CubeX tool kit.



4. Once both bolts are loose on the stabilizer bar, push the bar towards the back of the printer and tighten the bolts.